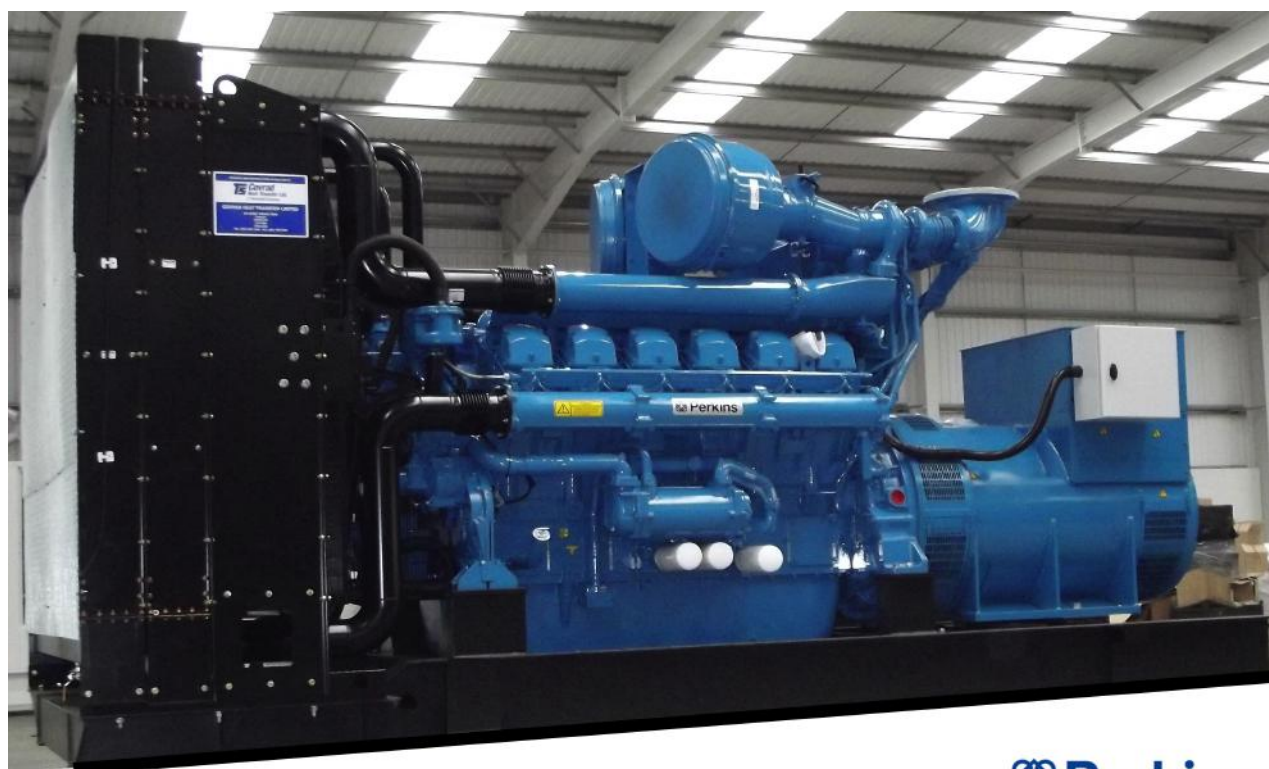


1500KVA PERKINS Stamford Diesel Generator



Dimensions

Containerised				OPEN			
Length (cm)	Width (cm)	Height (cm)	Weight (kg)	Length (cm)	Width (cm)	Height (cm)	Weight (kg)
12000	2438	2890	12528	499	219	251	10000

All dimensions and weights are approximate and should not be used for installation Canopy height includes silencer

General Specifications

KVA (Prime Rating) :	1500
Engine Type :	Perkins 4012-46TAG2A
Alternator:	Stamford P1734C
Volts :	400 / 230 v
Cycles Hz :	50
R.P.M. :	1500
Fuel Consumption at 75% :	237 Litre per hour



1500 KVA PERKINS Stamford Diesel Generator

Generating Set

- + Set Mounted Tropical Duty Radiator
- + Engine Driven Cooling Fan with Protection Guard
- + Radiator Stone Guard
- + Fuel, Lubricating Oil and Air Filter with Restriction Indicator
- + Mechanical governing at 1500/1800 RPM in accordance with BS5514A1 (1)
- + 24 Volt electric start with charging alternator
- + Steel base frame with integral 8 hour capacity fuel tank, complete with contents gauge, steel wire braded fuel lines, fill, vent and drain fittings
- + Anti vibration mountings fitted between the engine/alternator feet and base
- + Set mounted maintenance free lead acid battery with leads and terminals
- + Load and function tests
- + Paint finish to our standard scheme
- + Comprehensive user manual
- + Protection Switches for :
 - o High Engine Temperature
 - o Low oil pressure
 - o Wiring to Control Panel

Manual Start

- + 3 pole MCB/MCCB Mounted in control panel

ATS Panel

- + 4 Pole changeover contactors (2)
- + Indicators for
 - o Mains available
 - o Mains on load
 - o Generator Available
 - o Generator on load
 - o Phase failure monitor

Acoustic Canopy Features

- + Water and dust proof design
- + The sound level of the basic models is 85 dba @ 1 Meter
- + The material is Zinc plated mild steel
- + Acoustic insulation Material: High Density Mineral Wool
- + Exhaust Position: Roof Mounted
- + Attenuator position Internal with fixed blade weather louvres
- + Floor: Steel durbar plate:
- + Access: One door on each side with locking handles and internal handles
- + Lifting facility Standard ISO
- + Finish: External BS4800/RAL/BS381C single pack/Internal white or grey
- + CSC Plate: Standard



Deep sea 7310 module



Eagle Generators Ltd
Bagnall Street
Great Bridge, DY4 7BS, UK

Tel: +(0)121 557 0270
Email: sales@dieselgenerators.com
Website: www.dieselgenerators.com
Company Registration No. 7772136
VAT registration no. 120 5594 37



The Association of Manufacturers of
Power Generating Systems
www.amps.org.uk