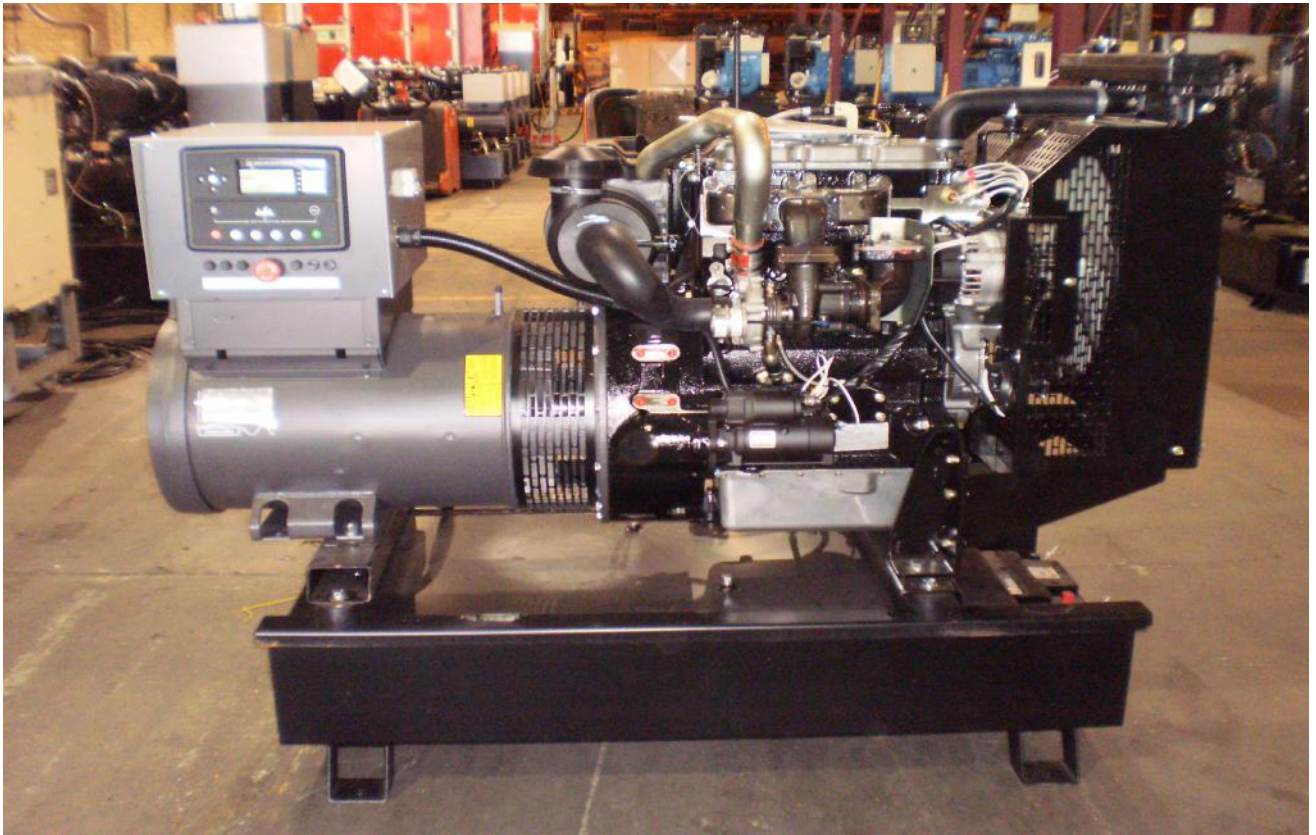


# 30 KVA PERKINS MECCALTE DIESEL GENERATOR



## Dimensions

| CANOPIED    |            |             |             | OPEN        |            |             |             |
|-------------|------------|-------------|-------------|-------------|------------|-------------|-------------|
| Length (cm) | Width (cm) | Height (cm) | Weight (kg) | Length (cm) | Width (cm) | Height (cm) | Weight (kg) |
| 172         | 76         | 135         | 1100        | 148         | 75         | 131         | 800         |

All dimensions and weights are approximate and should not be used for installation Canopy height includes silencer

## General Specifications

|                                  |                            |
|----------------------------------|----------------------------|
| <b>KVA (Prime Rating) :</b>      | <b>30</b>                  |
| <b>Engine Type :</b>             | <b>Perkins 1103A-33G</b>   |
| <b>Alternator:</b>               | <b>Meccalte ECP28-VL/4</b> |
| <b>Volts :</b>                   | <b>400 / 230 v</b>         |
| <b>Cycles Hz :</b>               | <b>50</b>                  |
| <b>R.P.M. :</b>                  | <b>1500</b>                |
| <b>Fuel Consumption at 75% :</b> | <b>5.5 Litre per hour</b>  |
| <b>Fuel tank capacity</b>        | <b>90 litres</b>           |



# 30 KVA PERKINS MECCALTE DIESEL GENERATOR

## Generating Set

- + Set Mounted Tropical Duty Radiator
- + Engine Driven Cooling Fan with Protection Guard
- + Radiator Stone Guard
- + Fuel, Lubricating Oil and Air Filter with Restriction Indicator
- + Mechanical governing at 1500/1800 RPM in accordance with BS5514A1 (1)
- + 12 Volt electric start with charging alternator
- + Steel base frame with integral 8 hour capacity fuel tank, complete with contents gauge, steel wire braded fuel lines, fill, vent and drain fittings
- + Anti vibration mountings fitted between the engine/alternator feet and base
- + Set mounted maintenance free lead acid battery with leads and terminals
- + Exhaust flexible section with connections
- + Silencer supplied loose (open set only)
- + Load and function tests
- + Paint finish to our standard scheme
- + Comprehensive user manual
- + Protection Switches for :
  - o High Engine Temperature
  - o Low oil pressure
  - o Wiring to Control Panel

## Manual Start

- + 3 pole MCB/MCCB Mounted in control panel
- + Deep Sea 7120 module

## ATS Panel

- + 4 Pole changeover contactors (2)
- + Indicators for
  - o Mains available
  - o Mains on load
  - o Generator Available
  - o Generator on load
  - o Phase failure monitor

## Acoustic Canopy Features

- + Water and dust proof design
- + The sound level of the basic models is 85 dba @ 1 Meter
- + The material is Zinc plated mild steel
- + The Canopy is finished in a powder coated RAL 9010 (White)

## Auto Start

- + Constant Potential battery charger
- + Battery charger On/Off pushbutton
- + Deep Sea 7120 module
- + Off/Auto/Manual selector keyswitch

## Deep sea 7120 module



Eagle Generators Ltd  
Bagnall Street  
Great Bridge, DY4 7BS, UK

Tel: +(0)121 557 0270  
Email: sales@dieselgenerators.com  
Website: www.dieselgenerators.com  
Company Registration No. 7772136  
VAT registration no. 120 5594 37



The Association of Manufacturers of  
Power Generating Systems  
www.amps.org.uk